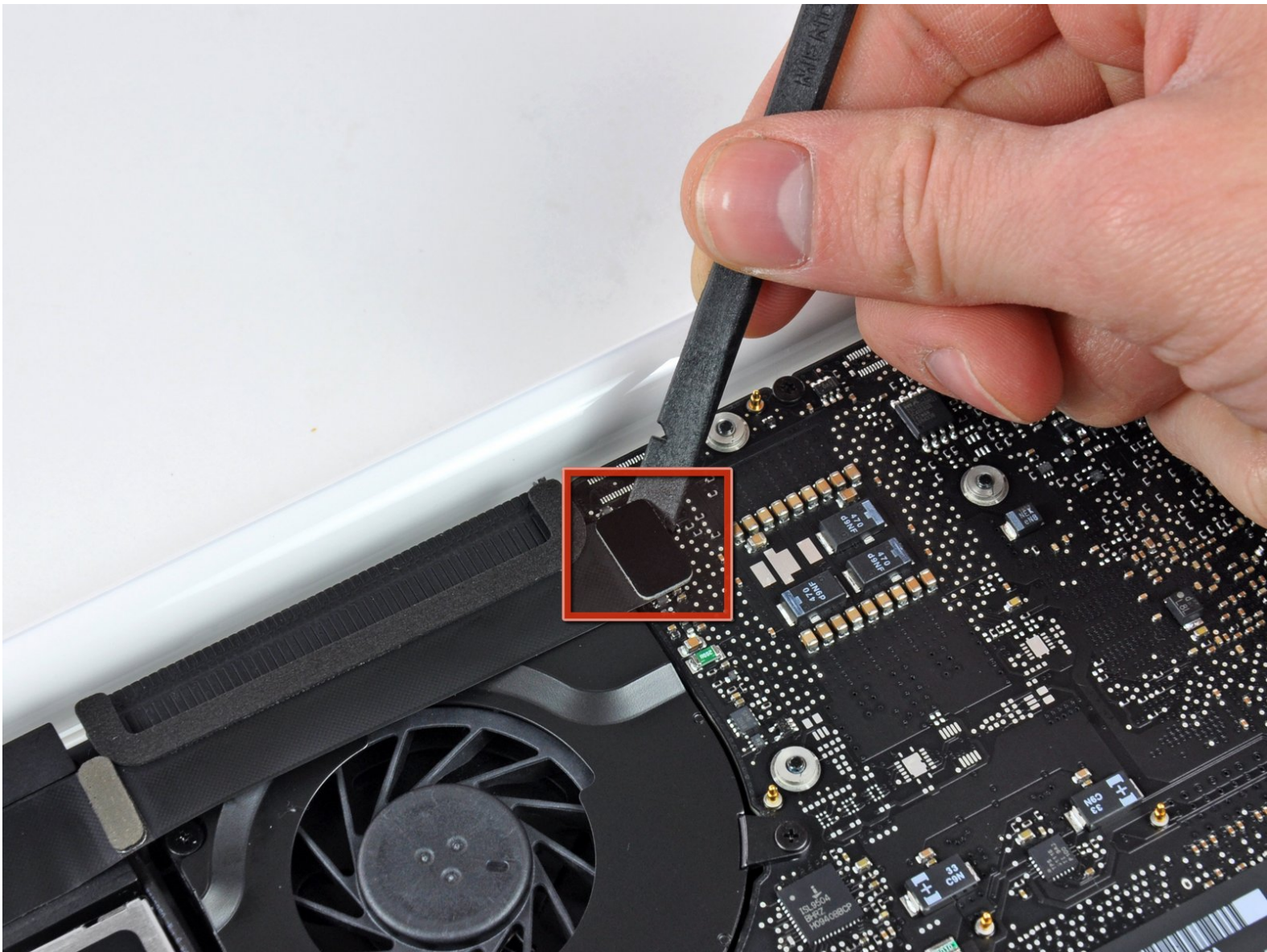




# MacBook Unibody Model A1342 Logic Board Replacement

Written By: Walter Galan



# INTRODUCTION

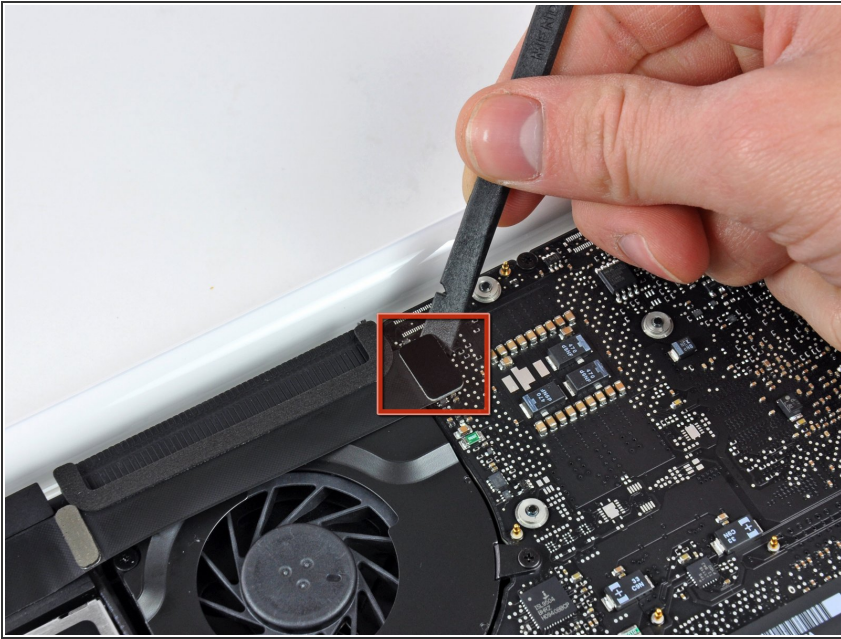
This guide is an internal private guide used as a prereq.



## TOOLS:

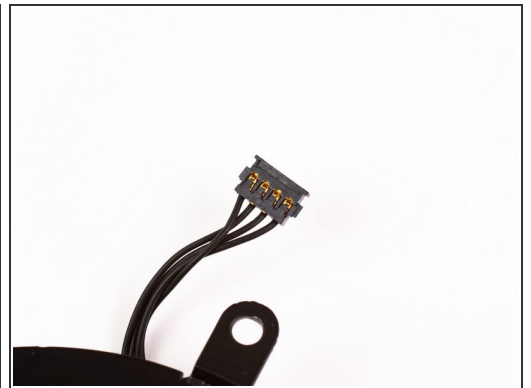
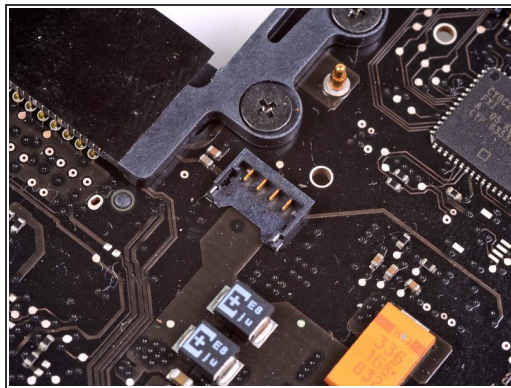
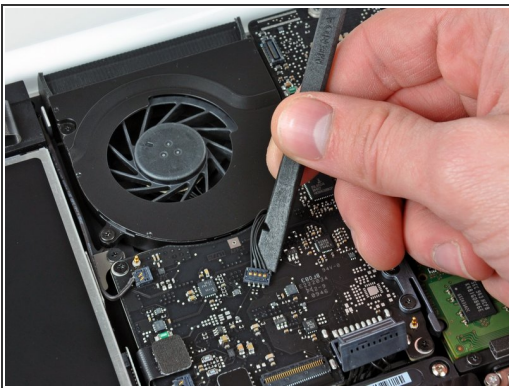
- [Phillips #00 Screwdriver](#) (1)
  - [T6 Torx Screwdriver](#) (1)
  - [Spudger](#) (1)
-

## Step 1 — Logic Board



- Use the flat end of a spudger to pry the AirPort/Bluetooth ribbon cable up off the logic board.

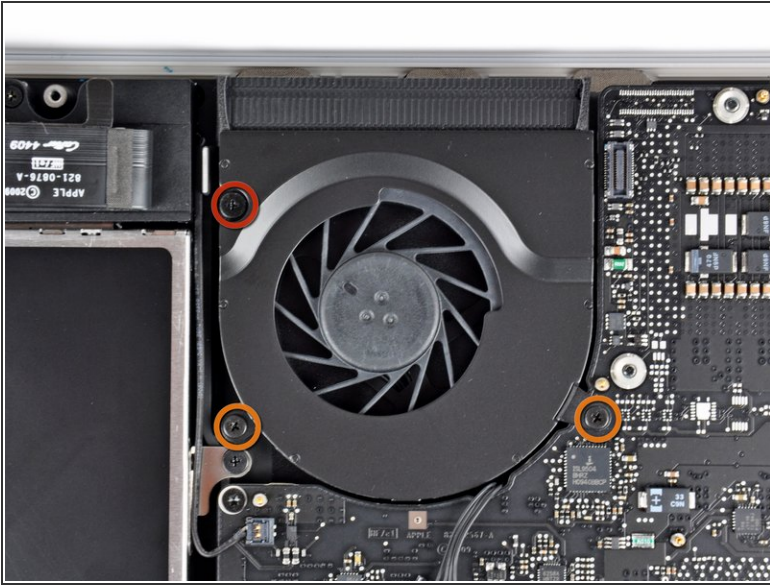
## Step 2



- Use a spudger to pry the fan connector straight up and out of its socket on the logic board.
- ⓘ It is useful to twist the spudger axially from beneath the fan cable wires to release the connector.
- ⚠ The fan socket and the fan connector can be seen in the second and third pictures. Be careful not to break the plastic fan socket off the logic board as you use your spudger to lift the fan connector straight up and out of its socket. The layout of the logic board shown in the second picture may look slightly different than your machine but the fan socket is the same.



## Step 3




- Remove the following three screws securing the fan to the upper case:
  - One 7.1 mm Phillips screw.
  - Two 5 mm Phillips screws.
- Lift the fan out of the upper case.

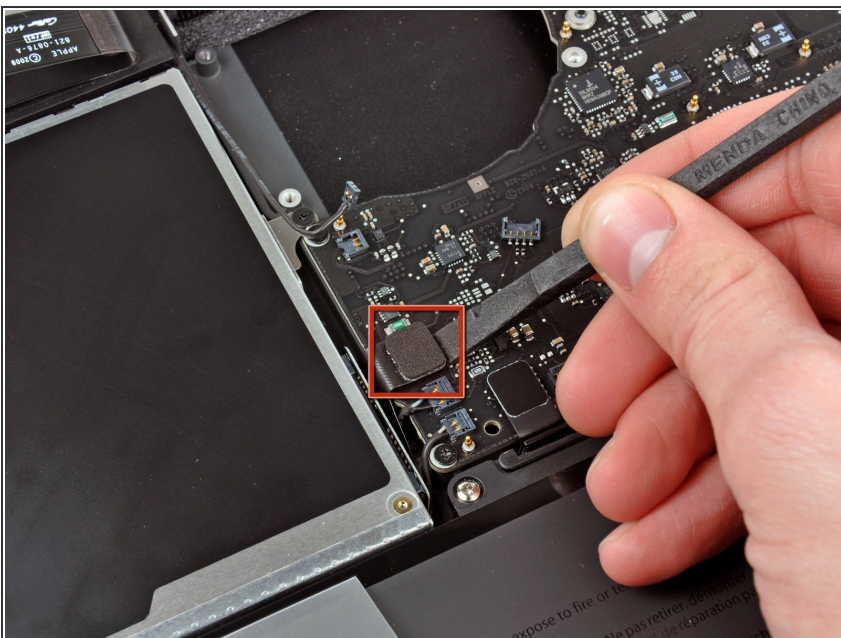
## Step 4



- Carefully pry the delicate rear speaker connector up off the logic board. These small L/R speaker connectors are quite easily broken.

 Use extreme caution; this connector is easily destroyed.

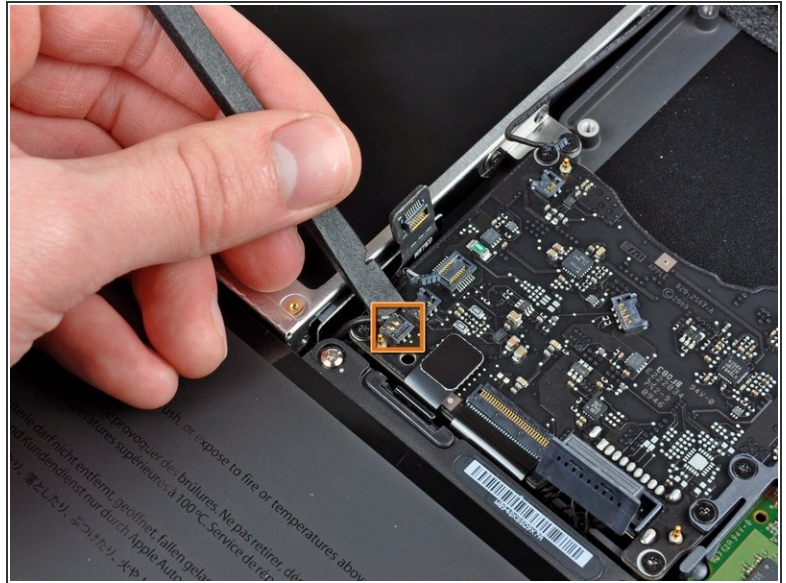
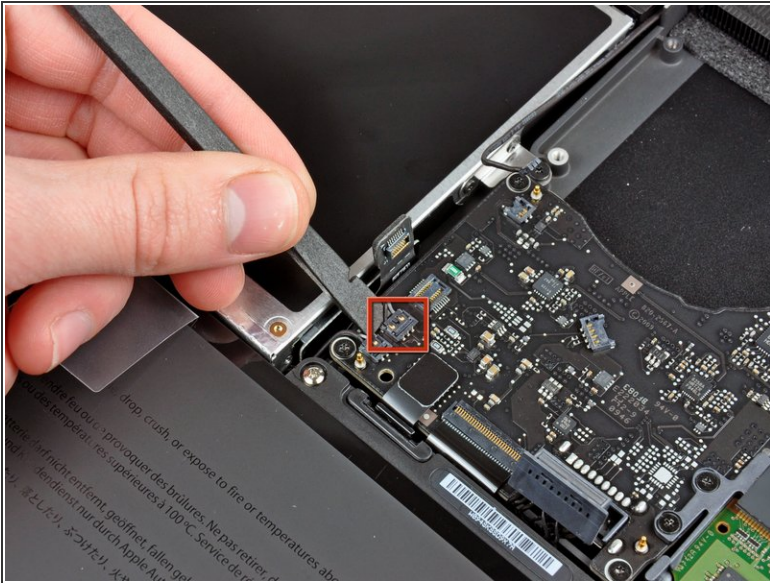
## Step 5



- Use the flat end of a spudger to pry the optical drive connector up off the logic board.



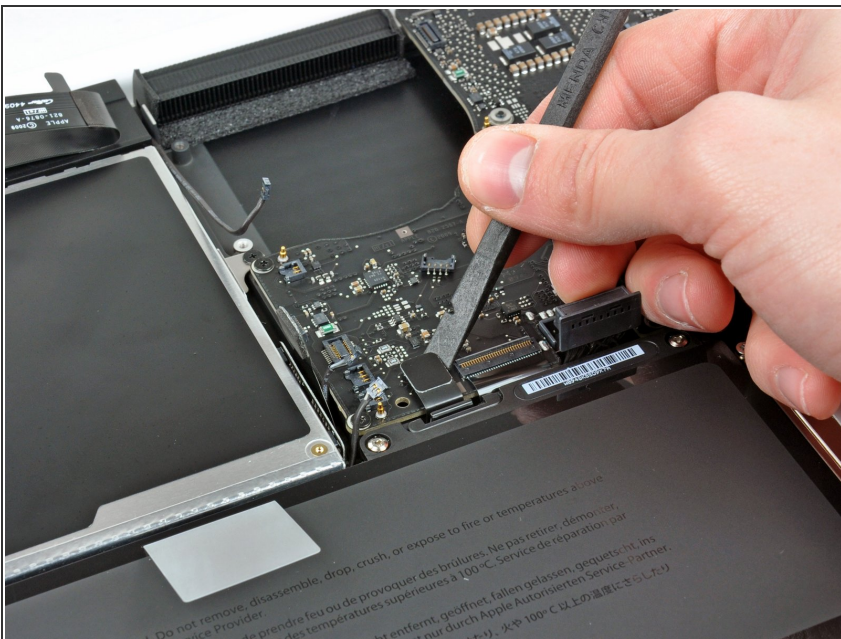
## Step 6



- Use a spudger to pry the right speaker connector and sleep LED connector up off the logic board.

⚠ These connectors are very delicate and easily broken.

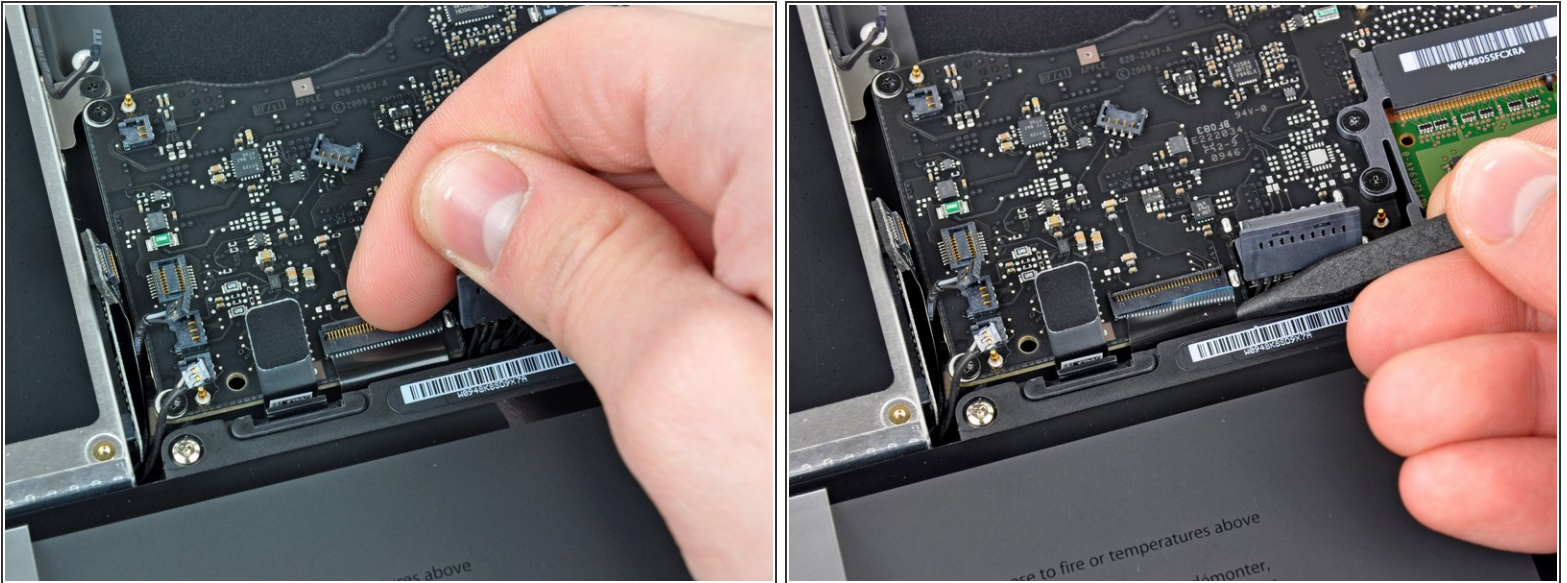
## Step 7



- Use the flat end of a spudger to pry the trackpad ribbon cable connector up off the logic board.

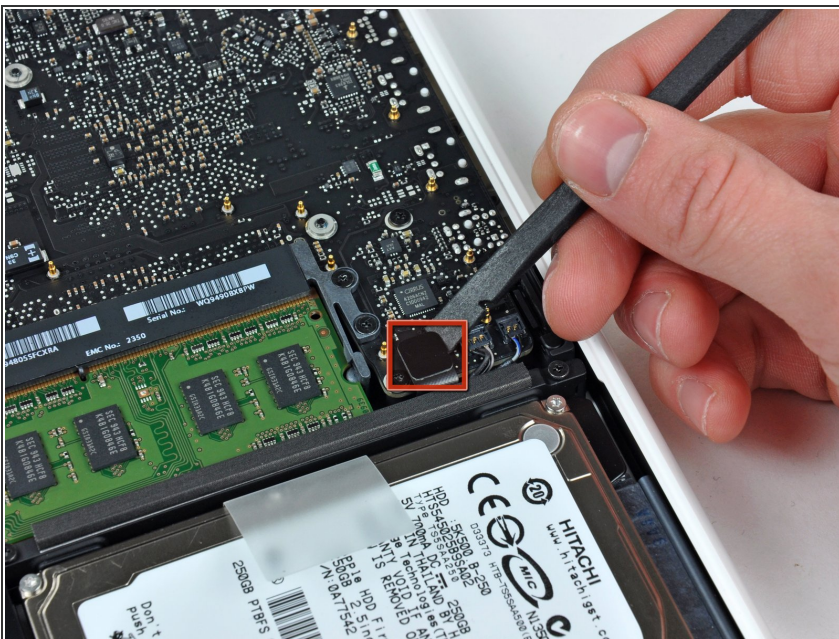


## Step 8



- Use your fingernail to flip up the locking flap on the ZIF socket for the keyboard ribbon cable.
- Use the tip of a spudger to slide the keyboard ribbon cable out of its socket.

## Step 9



- Use the flat end of a spudger to pry the hard drive cable connector up off the logic board.



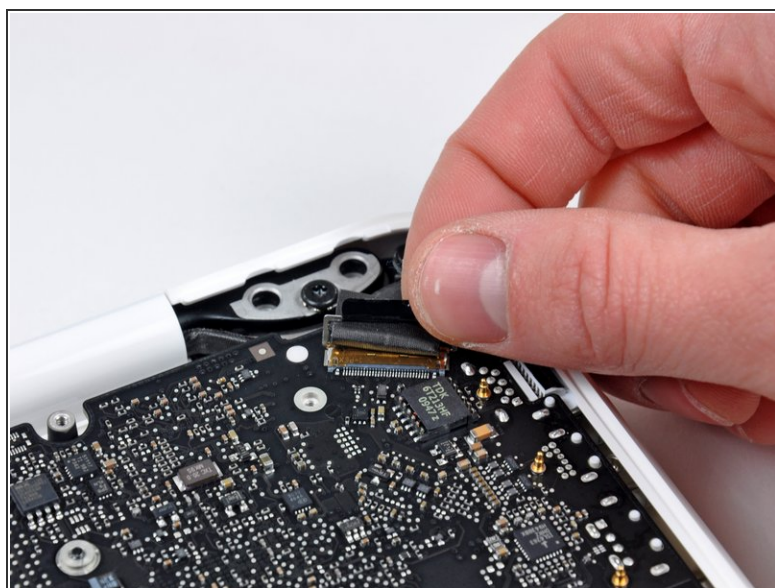
## Step 10



- Use a spudger to pry the left speaker connector and microphone connector up off the logic board.

⚠ These connectors are very delicate and easily broken.

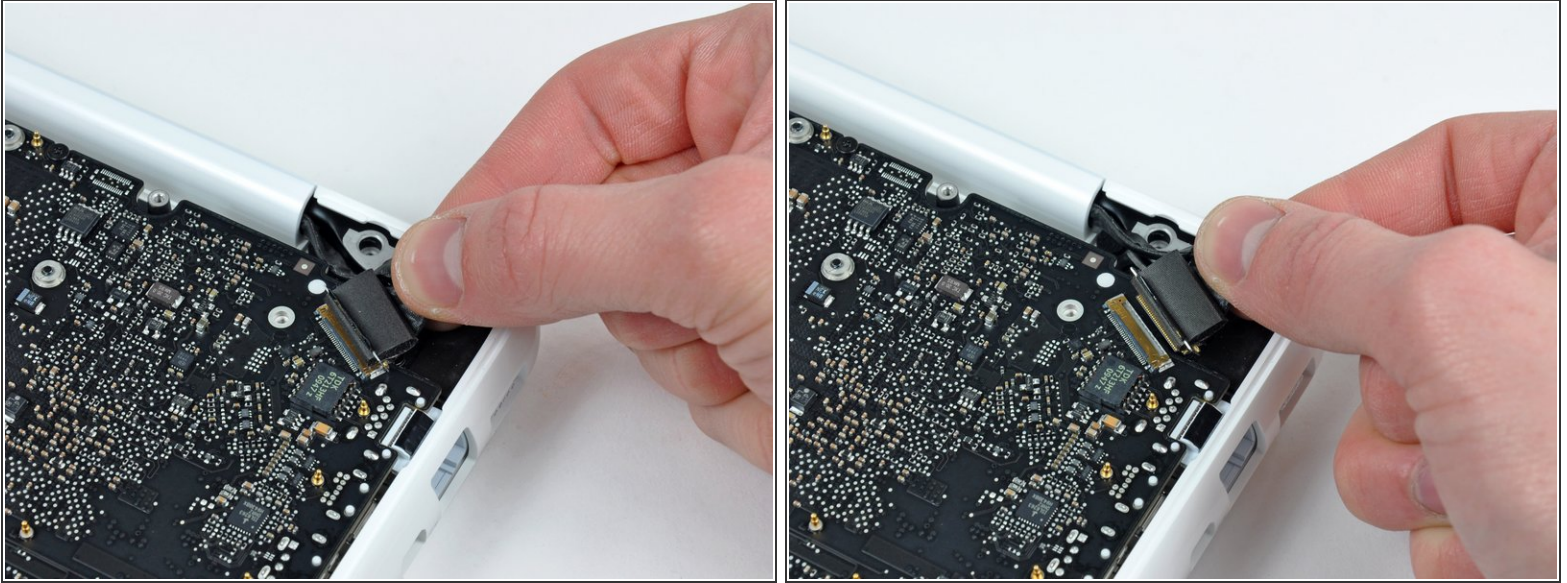
## Step 11



- Grab the plastic pull tab secured to the display data cable lock and rotate it toward the DC-In side of the computer.

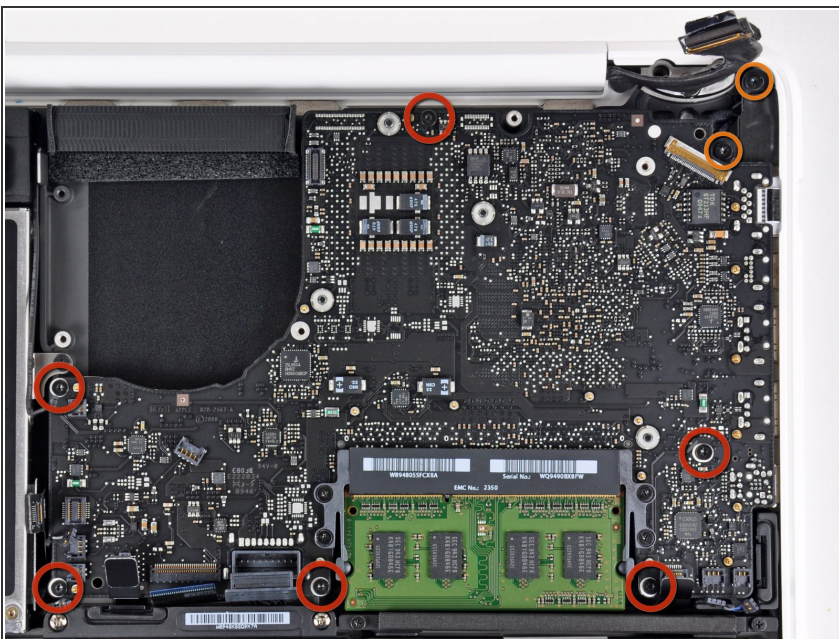


## Step 12



- Gently pull the display data cable connector away from its socket on the logic board.
- ⓘ Pull the socket parallel to the face of the logic board.
- ⚠ The display data cable socket is made of very thin metal and is easily bent. Be sure to pull the connector straight away from its socket.

## Step 13



- Remove the six 4.1 to 4.4 mm T6 Torx screws securing the logic board to the upper case.
- Remove the two 4.1 to 4.5 mm T6 Torx screws securing the MagSafe board to the upper case.
- On some models, these screws may be T7. Be careful not to strip away the head with a smaller bit.

## Step 14



- Lift the side of the logic board opposite the ports out of the upper case.
- Rotate the logic board away from the upper case until the ports clear the lip molded in the upper case.
- Pull the logic board and MagSafe board away from the edge of the upper case as one piece.
- ☑ The MagSafe board may get accidentally disconnected during this process. As a precaution, be sure the MagSafe board connector is securely seated in its socket before lowering the logic board back into the upper case.
- ☑ Before lowering the logic board back into the upper case, be sure the left speaker and microphone cables are seated in their channels cut into the upper case (as seen in the third picture).

To reassemble your device, follow these instructions in reverse order.